



Quick Start Guide

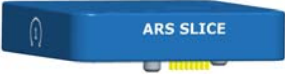





support@dtsweb.com


What you need:

Your SLICE System


SLICE MICRO modules include:


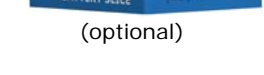
Example:



SLICE NANO modules include:




(2 connector options)





(optional)


Example:




SLICE Base Cable Kit



Software



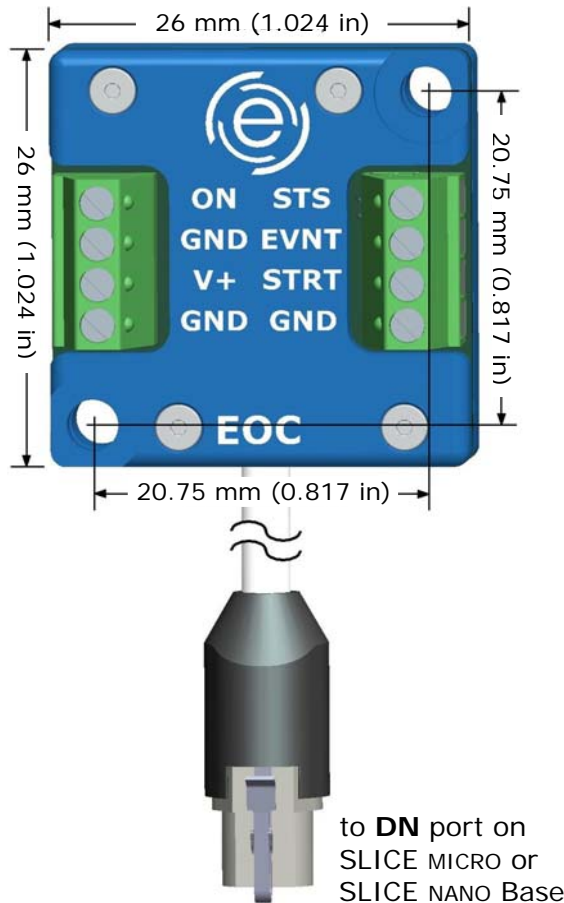
– or –



If you do not have a copy of the software, please e-mail support@dtsweb.com.



SLICE End-of-Chain Terminal



	Function	Connections
ON	Turns on SLICE	Contact closure = ON to GND (continuous) If ON signal is removed and the system is not armed, the system will turn off If ON signal is removed and the system is armed, the system will remain on and collect data (sufficient input power permitting)
V+	Power input	+V = input voltage (red) -V = GND (black)
STS	Status output	5 V logic-level output = STS to GND Conditioned status output; LED direct drive (≥ 20 mA) LED is on only when SLICE is collecting data
EVNT	Event input	Contact closure = EVNT to GND (momentary) An EVNT signal can initiate data collection (circular buffer mode) or mark an event within the data collection window (recorder mode)
STRT	Start record input	Contact closure = STRT to GND (momentary) A STRT signal initiates data collection (recorder mode)

20-30 AWG terminals.
All GND terminations are common.
Reverse polarity and overvoltage protection.



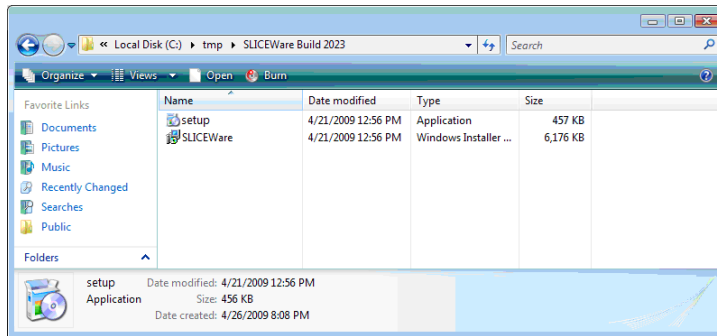
Quick Start Guide (continued)



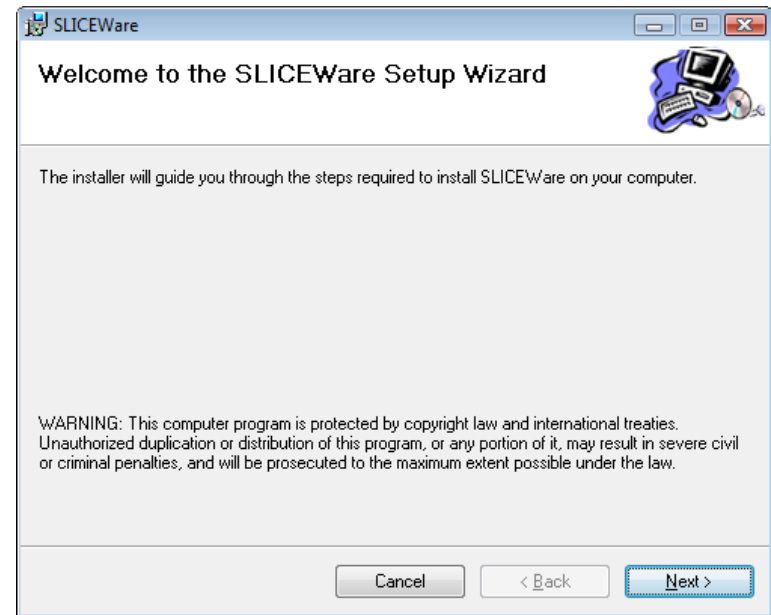
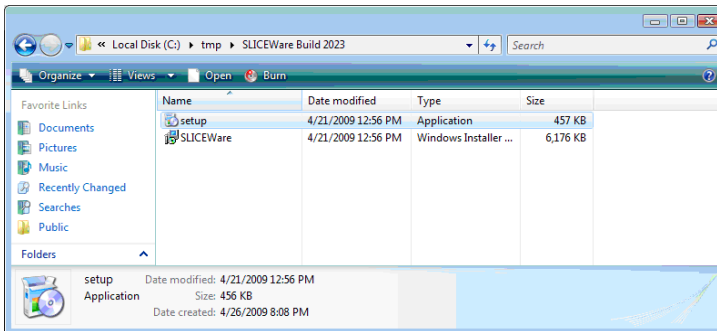
support@dtsweb.com

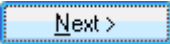
Step 1: Install the Software

Locate the installation files on the CD or flash drive provided.



Double-click the "setup.exe" file to begin installation.



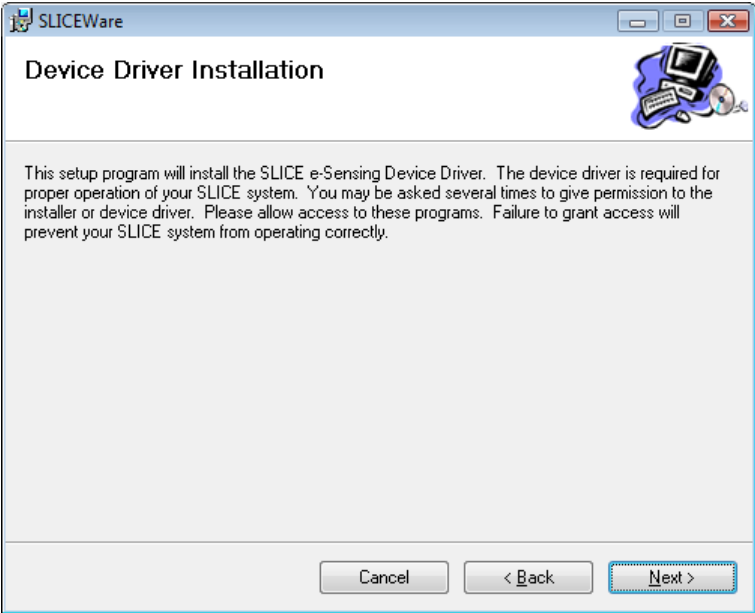
Click 




Quick Start Guide (continued)

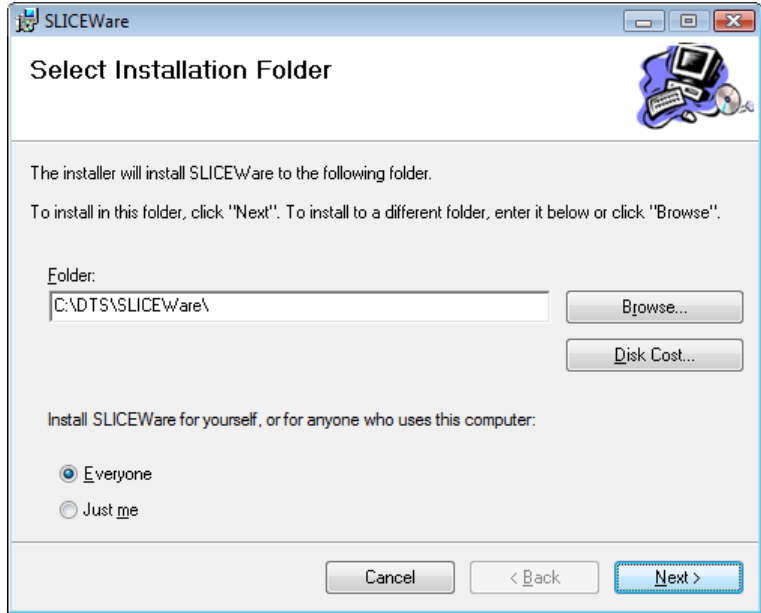


support@dtsweb.com



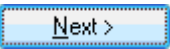
The screenshot shows the 'Device Driver Installation' window. The title bar reads 'SLICEWare'. The main text says: 'This setup program will install the SLICE e-Sensing Device Driver. The device driver is required for proper operation of your SLICE system. You may be asked several times to give permission to the installer or device driver. Please allow access to these programs. Failure to grant access will prevent your SLICE system from operating correctly.' At the bottom, there are three buttons: 'Cancel', '< Back', and 'Next >'. The 'Next >' button is highlighted with a blue dashed border.

Click .



The screenshot shows the 'Select Installation Folder' window. The title bar reads 'SLICEWare'. The main text says: 'The installer will install SLICEWare to the following folder. To install in this folder, click "Next!". To install to a different folder, enter it below or click "Browse!".' Below this is a text box containing 'C:\DTS\SLICEWare\' and a 'Browse...' button. There is also a 'Disk Cost...' button. Below that, it says 'Install SLICEWare for yourself, or for anyone who uses this computer:' with two radio buttons: 'Everyone' (selected) and 'Just me'. At the bottom, there are three buttons: 'Cancel', '< Back', and 'Next >'. The 'Next >' button is highlighted with a blue dashed border.

Accept or change the install folder and program accessibility.

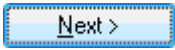
Click .



Quick Start Guide (continued)



support@dtsweb.com

Click 

The software is now being installed.



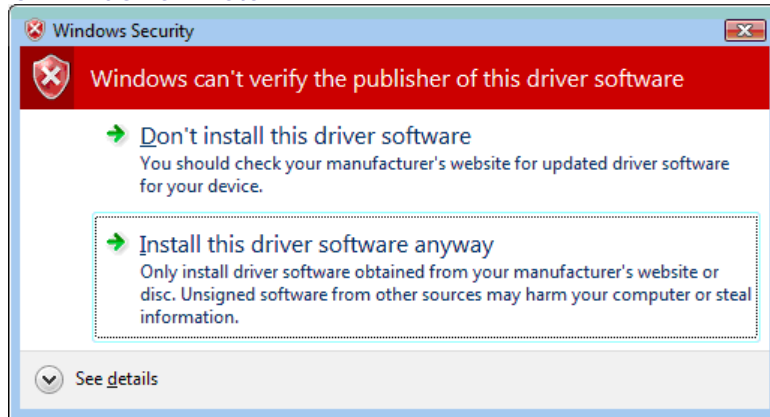
Quick Start Guide (continued)



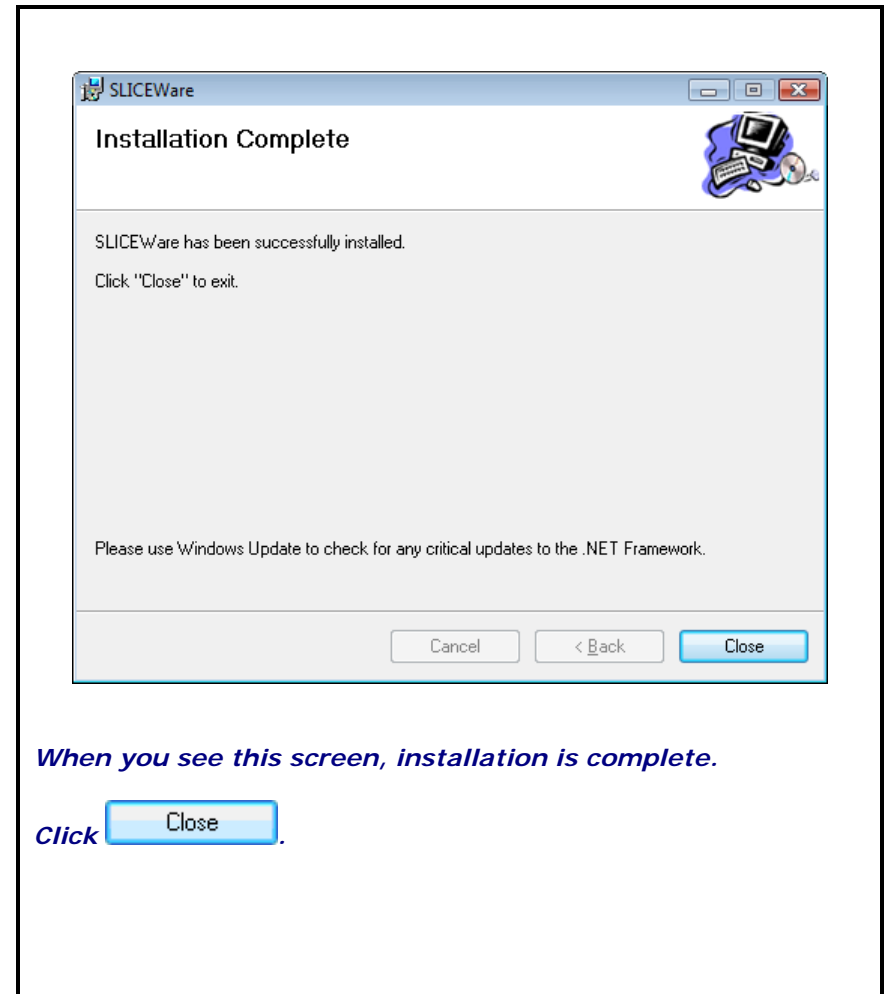
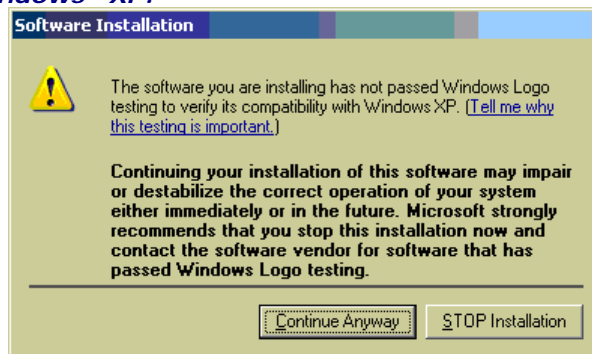
support@dtsweb.com

Confirm device driver installation...

...for Windows® Vista:



...for Windows® XP:





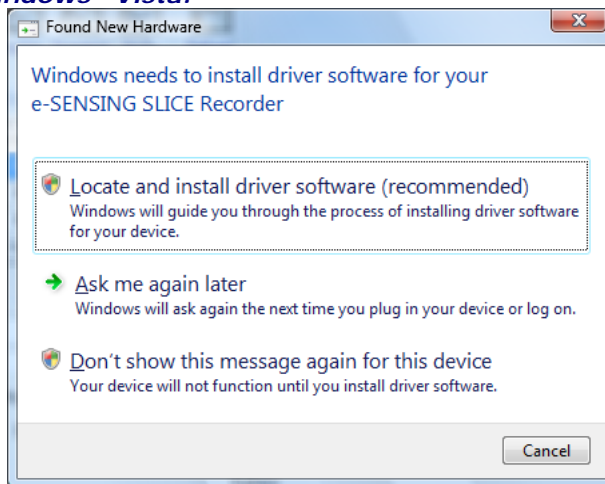
Quick Start Guide (continued)



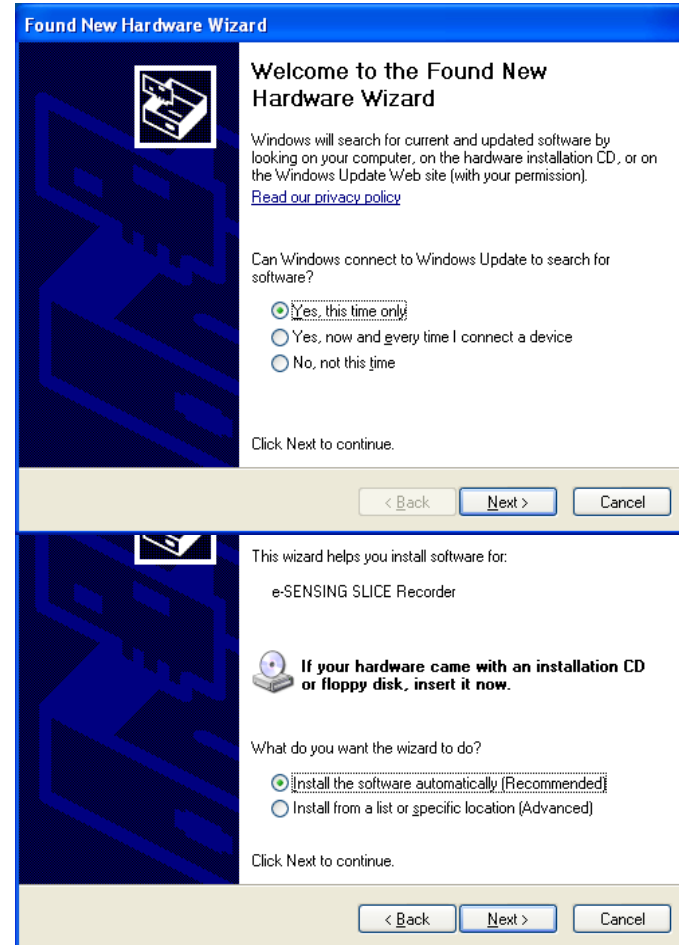
support@dtsweb.com

Note: *Windows® will ask you to reinstall the hardware driver each time you connect the SLICE stack to a different USB port.*

...for Windows® Vista:



...for Windows® XP:





Quick Start Guide (continued)



support@dtsweb.com

Step 2: Start the Software

Double-click the desktop icon...



SLICEWare

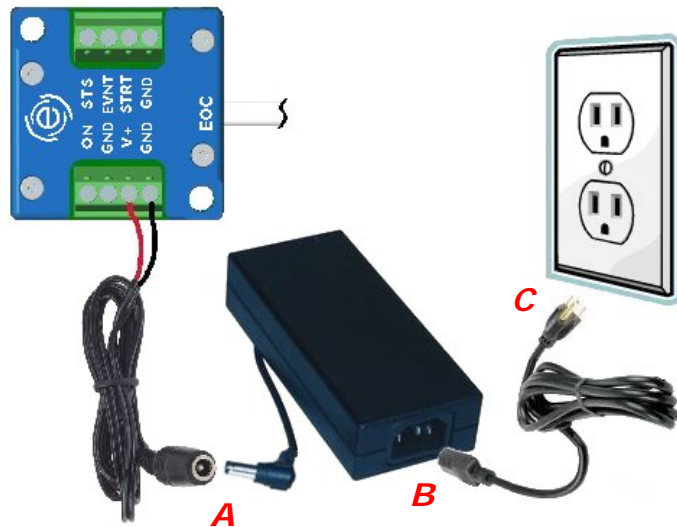
...or select Programs | SLICEWare | SLICEWare.



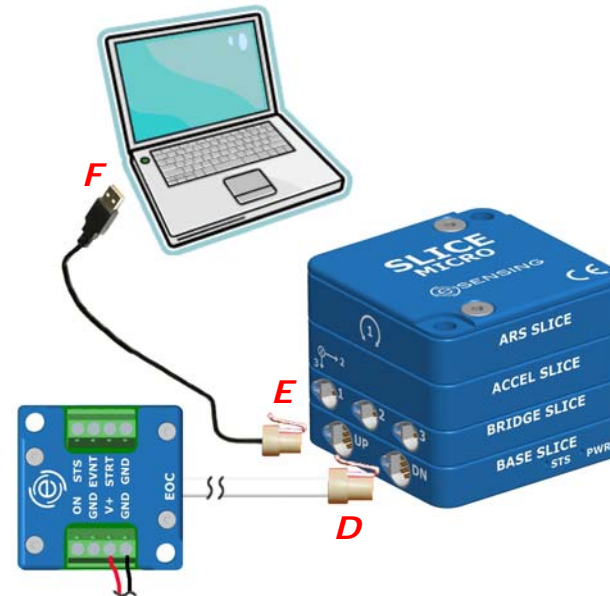


Step 3: Set Up the SLICE System

- A.** Connect the power cable from the SLICE End-of-Chain Terminal to the power supply.
- B.** Connect the power supply to the AC power cord.
- C.** Connect the AC power cord to 100-220 VAC power.

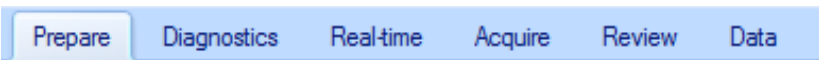


- D.** Connect the 12-conductor SLICE connector on the End-of-Chain Terminal to the DN port on the SLICE Base module.
- E.** Connect the SLICE connector on the USB cable to the UP port on the SLICE Base module.
- F.** Connect the USB end to the USB port on your computer.

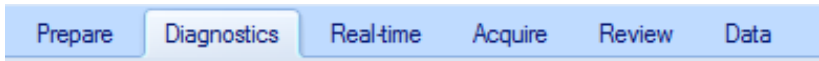




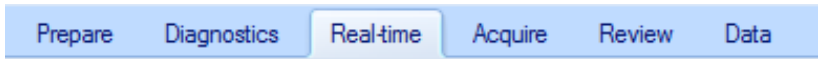
SLICEWare Software



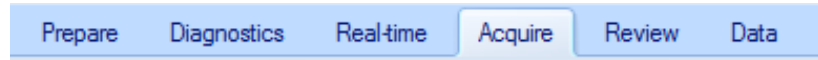
This tab identifies the relationship between available sensors and the attached SLICE units. Sensor information can be added, removed, viewed, edited or assigned to channels on connected data acquisition hardware.



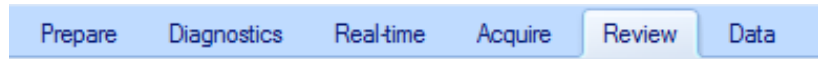
This tab ensures that the connected hardware is operating normally. Hardware diagnostics include checks for battery level, excitation voltage, noise and expected offset.



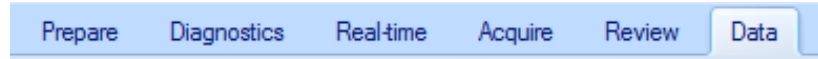
This tab shows data input to the attached SLICE hardware in real time. It is a useful tool for establishing confidence in the current hardware configuration prior to data collection.



This tab configures and controls the data acquisition process. The user enters the test name, description, sample rate, acquisition mode (circular buffer or recorder mode), pre- and post-trigger times and then prepares the system for data acquisition with the arm command. After the test is completed, the user can use the download command to view the data.



This tab displays collected data. Previously downloaded tests can be viewed and examined on a per-channel basis.



This tab provides export options for collected data. Export options include CSV, ISO and DIAdem formats.